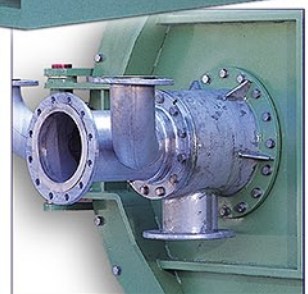
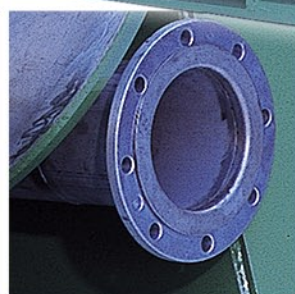


# TURBOSEPARATOR SC



The TURBOSEPARATOR SC is traditionally used for light rejects removal in stock preparation plants using waste paper. Thanks to its specific features, the TURBOSEPARATOR SC is suitable to work in hard conditions and to increase pulper productivity adding slushing capacity to the line. Normally used as coarse screen, it can be combined with auxiliary machines in order to optimize rejects handling and fibers recovery. Thanks to vat shape, rotor characteristics and inlet/outlet piping positions, the TURBOSEPARATOR SC is suitable for low specific energy consumption cleaning systems.